

GREAT LAKES
CASE & CABINET



Invest in Solid Engineering

DATA CENTER SOLUTIONS FOR SUCCESSFUL COMPANIES

CABLE MANAGEMENT SOLUTIONS



THE RIGHT SOLUTIONS FOR YOUR CABLE MANAGEMENT NEEDS



Great Lakes Cable Management Solutions provide data center managers and IT professionals with a variety of options from complete networking enclosures (designed specifically for high density cable applications), to accessories for traditional server and telecom enclosures, and cable managers for open rack systems.

The Enhanced Networking (EN) Enclosures provide cable management and cooling support for networking and switch applications. Large amounts of open area outside of the rails, repositionable sections of plastic cable fingers, and strategically positioned knockouts can easily accommodate the needs of switches and patch panels. Additional cable and cooling accessories for the EN can improve cable pathways and enhance equipment airflow.

ES Server Enclosures and E Series Enclosures are designed to meet the needs of servers, switches, data and telecom equipment. Both are available in a variety of sizes and all are engineered to be easily upgraded as needed. Great Lakes offers an extensive line of accessories and cable management products to accommodate future equipment upgrades, or changes in enclosure function within the data center. We offer everything from overhead, vertical and horizontal cable management, to side-to-side airflow and much more.

In addition to a broad portfolio of free standing and wall mount enclosures, Great Lakes offers a variety of Two and Four Post Racks with a host of cable management products and accessories. Racks provide an open solution for networking and connectivity in data centers and other business situations.

ENHANCED NETWORKING ENCLOSURE

The EN Enclosure is 84"H and is available in two sizes; the GL840ENT-4048 (40"W x 48"D) and the GL840ENT-3242 (Shown below at 32" Wide & 42" Deep). The EN Enclosure is shipped fully assembled and is capable of handling simple to complex data, switch, server and cable management requirements. A more detailed discussion of additional features, configurations and optional accessories can be found on the following pages.

1 EN FRAME

- No corner posts creates room for large bundles outside of rails
- Easily ganged together at top of frame

2 TOP CABLE ACCESS

- Large Knockouts for top cable
- Ladder Rack Brackets easily support ladder rack and large cable bundles
- Top cable troughs also available

3 RAILS

- Two sets of 45 RMU, tapped #12-24 rails (3/8" SQ. hole [M6] mounting rails also available)
- Front rails are fixed and recessed 6.5" from front of enclosure (8" on GL840ENT-4048)
- Rear rails are fully adjustable
- Maximum rail spacing of 29"; (32" on GL840ENT-4048)
- Flexible Mounting Profile (FMP) allows mounting of accessories that do not interfere with EIA pattern; 3 sets of holes on each rail (front, side and rear of rail)

4 CABLE MANAGEMENT FINGERS

- Fingers, made up of 7 RMU sections, are pre-installed on all rails
- Finger openings align with RMUs for easy cable pathways
- Finger sections are repositionable
- Additional kits of 7 RMU finger sections available, see pg. 10



5 BAFFLE KIT

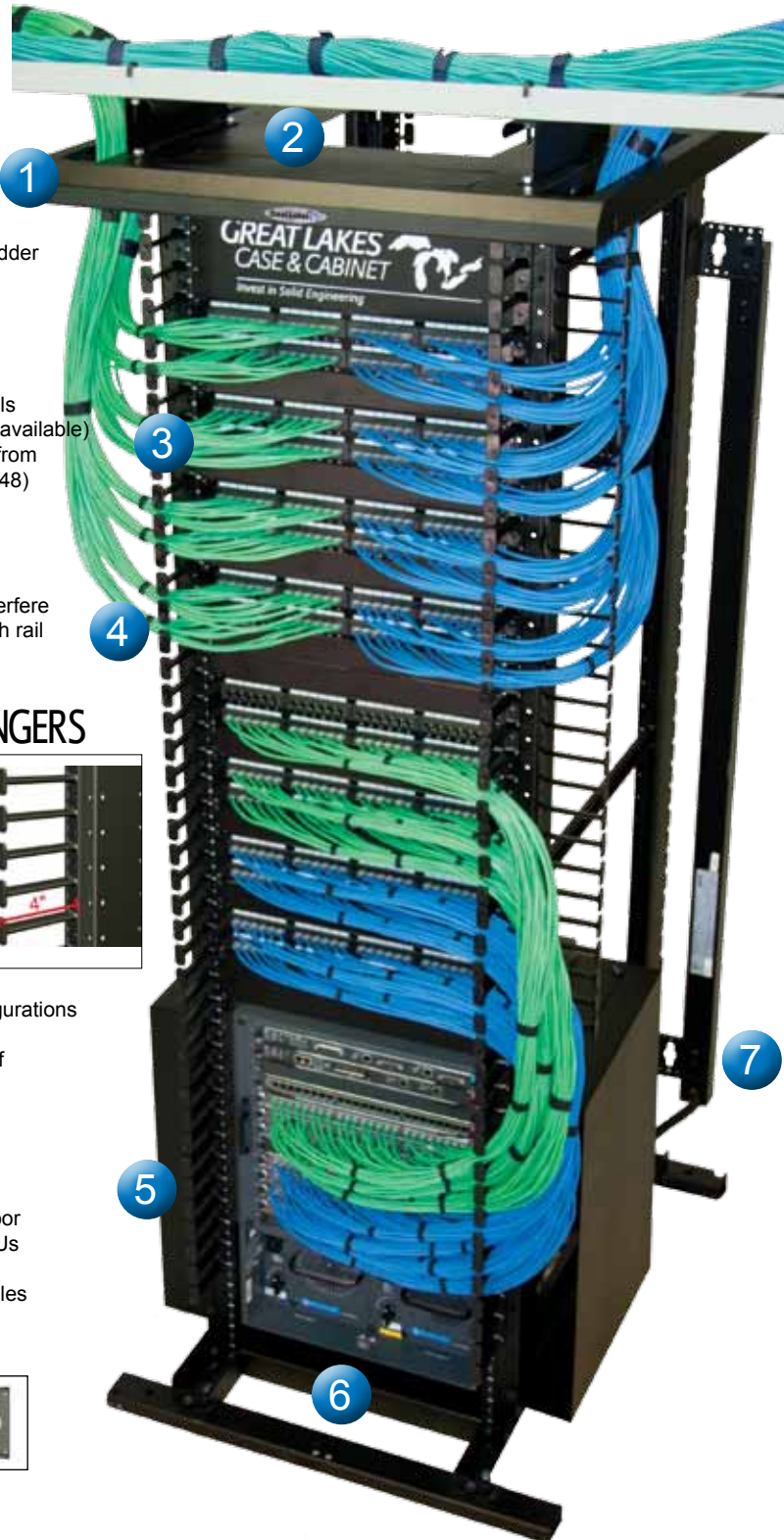
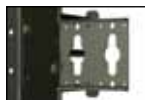
- Standard part of 40"W enclosure configurations (kit is optional in GL840ENT-3242)
- Directs cool air in and exhaust air out of side-to-side airflow equipment
- Easily mounts to rails with no tools

6 BOTTOM CABLE ACCESS

- No bottom panel creates easy under-floor access for cable bundles and large PDUs
- Optional Koldlok raised floor grommets seal floor tile cutouts while allowing cables to pass through

7 PDU BRACKETS

- One pair of brackets on each rear rail
- Easily repositionable for various PDU sizes



ENHANCED NETWORKING ENCLOSURE

EN enclosures are designed with built-in features to manage high density cable management applications of switches & servers.

- Knockouts and openings for top and bottom cable access
- Repositionable finger sections along each rail
- Open side area accommodates large bundles within and between ganged enclosures

Optional accessories create a complete cable management and cooling solution.

- Baffle kits for CISCO switches (and other side-to-side airflow equipment) directs cool air in and exhaust out of equipment
- 19" cable managers can be added (see page 10)
- Zero RMU mounting brackets allow vertical mounting of patch panels and power strips to save valuable RMU space

The EN ships completely assembled and is ready for immediate use! With two enclosure sizes, no complicated extension kits are needed.



The EN Enclosure is compatible with side-to-side airflow equipment. The EN meets all minimum clearance requirements specified by CISCO.

OPTIONAL ACCESSORIES

BAFFLE KIT

- Standard part of 40"W enclosure configurations (kit is optional in GL840ENT-3242)
- Directs cool air in and exhaust air out of side-to-side airflow equipment
- Easily mounts to rails with no tools

OVERHEAD CABLING

- Ladder Rack Brackets and Top Cable Trough facilitate the flow of cables in and out of the enclosure
- No overhead infrastructure changes needed

BRUSH GROMMET

- Covers knockouts while still allowing cables to pass through

ZERO RMU MOUNTING BRACKETS

- Vertically mount up to 2 RMU wide equipment without taking up RMU space
- Up to 4 brackets can be mounted on each rail

EN CONFIGURATIONS AND COOLING EQUIPMENT

BAFFLE KIT

Baffle Kits create proper airflow for switches, and side-to-side airflow equipment, as suggested by manufacturers such as CISCO. Cool air is channeled into the equipment along the right side and exhaust air is directed out along the left side of the equipment. Kits are tool-less and easily attach to rails outside of the EIA mounting profile. Kits (available for 19, 14, and 11 RMU equipment) are unique to EN and ES enclosures, creating the perfect fit between switch and enclosure!

ENCLOSURES FOR BAFFLE KITS: EN AND ES ENCLOSURES

EN enclosures are designed specifically to support the high-density cable management needs of switch and network application. ES Enclosures are ideal for servers where cable management, cooling, and power are a necessity.

CHOOSING YOUR BAFFLE KIT AND ENCLOSURE

Based on your switch/equipment, choose the appropriate EN or ES enclosure. Consider your cable management, cooling, and power needs, as each enclosure addresses these needs in different ways. Baffle Kit part numbers are determined by whether an EN or ES enclosure is selected.

The chart below shows which kits accommodate various CISCO switches. Other brands of side-to-side airflow equipment can also be mounted. To determine the correct enclosure and baffle kit, compare physical equipment dimensions to what is listed.



DOORS & SIDES



GL840ENT-4048SSS

DOORS & BAFFLE KIT



GL840ENT-4048SSS-NS

FRAME & BAFFLE KIT



GL840ENT-4048-FK

	Recommended Great Lakes Enclosure		Great Lakes Baffle Kit Part No.		Physical Equipment Dimensions	
	EN Series Enclosure	ES Series Enclosure	EN Baffle Kit	ES Baffle Kit	RMU	Depth
7000 Series						
7018 ¹	40"W x 48"D	N/A	ENSAB25	N/A	25 RMU	32.00"
9000 Series						
9513	32"W x 42"D	30"W x 42/48"D	ENSAB14D	ESSAB14D	14 RMU	28.00"
9509 ²	32"W x 42"D	30"W x 42/48"D	ENSAB14	ESSAB14	14 RMU	18.40"
6000 Series						
6513(-E)	32"W x 42"D	30"W x 42/48"D	ENSAB19	ESSAB19	19 RMU	18.10"
6509(-E)	32"W x 42"D	30"W x 42/48"D	ENSAB14	ESSAB14	14 RMU	18.10"
6506(-E)	32"W x 42"D	30"W x 42/48"D	ENSAB11	ESSAB11	11 RMU	18.10"

¹ Four post mounting is required with a rail placement of 24". ² An additional 0.75" of height is required for rail mount brackets; brackets can be removed after chassis is installed. NOTE: It is important to read and understand CISCO installation guides that are associated with each switch.

Although equipment may physically fit into a Great Lakes enclosure, with or without brackets, customers must also review and comply with the equipment manufacturer's installation and other requirements. For example, the E and ES Series Enclosures, when in an open frame configuration, can physically support the installation of a Cisco 7018 Series switch; however, the E and ES Series Enclosure frame designs do not provide the airflow space clearance required by Cisco.

Great Lakes' EN (Enhanced Networking) Series of enclosures is designed to support the installation of Cisco switches and other side-to-side airflow equipment. The EN Series has the airflow space clearances that are currently required and has accessories (including baffle kits) that are designed to support proper operational conditions. For more information, please contact your Great Lakes representative or call 1-866-TRY-GLCC.

When any equipment or accessory is installed in a Great Lakes product, the installation procedures, recommendations and product warranty requirements of the equipment manufacturer must be followed. Great Lakes will not be responsible for any losses or claims arising from a customer's installation of electrical, electronic or other third party products in any Great Lakes enclosure, unless caused solely by a written configuration prepared by Great Lakes for that customer or by a configuration provided by Great Lakes' website, any configuration relies on complete and accurate information from the customer.

ENHANCED NETWORKING CONFIGURATIONS



EN ENCLOSURES

Part No.

Description

GL840ENT-3242MSS	84"H x 32"W x 42"D Enclosure with two pair of tapped #12-24 mounting rails with cable management fingers on all rails; includes 8 levelers, solid top, mesh front door, split mesh rear door, and solid sides
GL840ENT-3242MSS-NS	84"H x 32"W x 42"D Enclosure with two pair of tapped #12-24 mounting rails with cable management fingers on all rails; includes 8 levelers, solid top, mesh front door, split mesh rear door; sides not included
GL840ENT-3242-FK	84"H x 32"W x 42"D Enclosure with two pair of tapped #12-24 mounting rails with cable management fingers on all rails; includes 8 levelers; doors and sides not included
GL840ENT-4048SSS	84"H x 40"W x 48"D Enclosure with two pair of tapped #12-24 mounting rails with cable management fingers on all rails; includes 8 levelers, solid top, split mesh front door, split mesh rear door, solid sides, and baffle kit (25 RMU) for CISCO 7018 switch
GL840ENT-4048SSS-NS	84"H x 40"W x 48"D Enclosure with two pair of tapped #12-24 mounting rails with cable management fingers on all rails; includes 8 levelers, solid top, split mesh front door, split mesh rear door, and baffle kit (25 RMU) for CISCO 7018 switch; sides not included
GL840ENT-4048-FK	84"H x 40"W x 48"D Enclosure with two pair of tapped #12-24 mounting rails with cable management fingers on all rails; includes 8 levelers and baffle kit (25 RMU) for CISCO 7018 switch; doors and sides not included

Note: For enclosure with 3/8" SQ. hole (M6) mounting rails, remove 'T' from part number.

BAFFLE KITS FOR EN ENCLOSURES

Part No.

Description

ENSAB19	Baffle Kit for use with 15.8"D to 18.5"D, 19 RMU CISCO and other side-to-side airflow equipment
ENSAB14	Baffle Kit for use with 15.8"D to 18.1"D or 18.4"D, 14 RMU CISCO and other side-to-side airflow equipment
ENSAB14D	Baffle Kit for use with 25.7"D to 28"D, 14 RMU, CISCO and other side-to-side airflow equipment
ENSAB11	Baffle Kit for use with 15.8"D to 18.1"D, 11 RMU CISCO and other side-to-side airflow equipment

BAFFLE KITS FOR 30"W ES ENCLOSURES

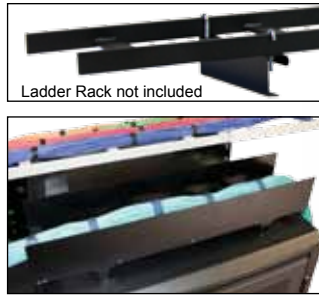
ESSAB19	Baffle Kit for use with 15.8"D to 18.5"D, 19 RMU CISCO and other side-to-side airflow equipment
ESSAB14	Baffle Kit for use with 15.8"D to 18.1"D or 18.4"D, 14 RMU CISCO and other side-to-side airflow equipment
ESSAB14D	Baffle Kit for use with 25.7"D to 28"D, 14 RMU, CISCO and other side-to-side airflow equipment
ESSAB11	Baffle Kit for use with 15.8"D to 18.1"D, 11 RMU CISCO and other side-to-side airflow equipment

CABLE MANAGEMENT MADE

1 OVERHEAD CABLING

LRB, Ladder Rack Brackets & **TCT**, Top Cable Trough

- Facilitate the flow of cable in and out of the enclosure
- No overhead infrastructure changes needed
- Strength of enclosures can easily handle multiple bundles



Great Lakes cable management accessories can be used with equipment in your enclosure. The specific accessories include multiple patch panels and a CISCO® 6500 Series Switch. The "family" varies in its size, shape, material, or finish.

While most accessories are compatible with ES and E Series Enclosures, please refer to the product literature for more information.

2 CABLE RINGS

CM-11, Cable Ring Kit (5 rings)

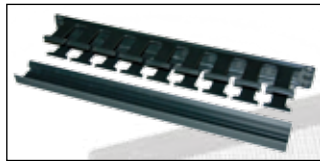
- 3"W x 5"D rings support large bundles
- Mounts to rails without interfering with EIA pattern
- Rings can be used alone, or all 5 create a "virtual" cable trough



3 19" CABLE ORGANIZERS

CM-16, 1 RMU Plastic Organizer

- Helps organize and direct cables between patch panels
- 1.5" x 3" channel
- Covers and hides cables to provide protection



4 CABLE MANAGEMENT POST

CMP, Single Post or **CMP-8**, package of 8

- 3" post creates separate pathways for large bundles
- Mounts to rails without interfering with EIA pattern



5 FILLER PANELS

3.50-FPTL19, Tool-less Filler Panel

- Prevents by-pass airflow
- Used to "save" RMU space for future patch panels and equipment
- Quick to install and uninstall
- For M6 rails only
- For complete list of part numbers, visit werackyourworld.com



6 BAFFLE KIT

ESSAB14, Intake/Exhaust Kits for side-to-side airflow equipment

- Directs cool air in and exhaust air out of side-to-side air flow equipment
- Easily mounts to rails with no tools
- Kits available for 11, 14 and 19 RMU side-to-side airflow equipment



7 BRUSH GROMMET

BGT, Top Brush Grommet Kit

- Allows cables to pass overhead while "isolating" airflow



8 EXTERNAL CABLE MANAGER

SC128442, "Side Car"

- Complete dimensions 84"H x 12"W x 42"D
- Two adjustable, vertical troughs (front and rear)
- Fingers easily pass cables from enclosure to "side car"
- Repositionable cable management posts create separate pathways for large bundles
- Large openings to run cable front to rear
- Multiple attachment points for cable straps

9 BOTTOM CABLE ACCESS

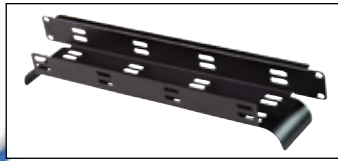
Bottom Cable Opening and Floor Grommets

- Large cable bundles easily pass through bottom of enclosure
- Brush Grommet Bottom Panel (not pictured) available
- Koldlok® raised floor grommets seal floor tile cutouts

MANAGEMENT EASY

ed alone or together to create a complete solution for the
picted can be used in any 30"W ES server enclosure;
h are installed in the pictured enclosure. Each accessory
features...choose the one based on your needs!

note that some parts are intended for ES enclosure use only (see following pages).



WATERFALL CABLE MANAGER 10

- CM-07**, Cable Manager
- Routes cables horizontally across the enclosure
 - 1 RMU
 - Creates a safe bend radius



VERTICAL ORGANIZERS 11

- VCT-84**, Vertical Cable Troughs
- Safely routes bundles vertically in the enclosure
 - Up to 2 (in 42"D enclosure) or 3 (in 48"D enclosure) fit in each rear corner of enclosure
 - Can also be installed in front of enclosure (with horizontal lacing bars)
 - 3"W x 2.5"D trough
 - Optional cover to protect cable



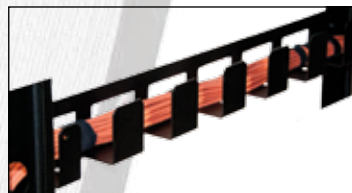
STRAIN RELIEF BARS 12

- CM-10**, Cable Management Panel
- Provides support for cables across the enclosure
 - Attachment points for cable straps
 - For complete list of part numbers, visit werackyourworld.com



LACING BARS 13

- VLB-8436**, Horizontal & Vertical Lacing Bars
- Vertical bar fully adjustable front to rear
 - Horizontal bars can be placed in any necessary location
 - Horizontal & vertical slots as attachment point for cable straps
 - Bars are 4" wide



HORIZONTAL TROUGH 14

- HCM-D36**, Horizontal Cable Trough
- Route larger bundles from front to rear
 - Can be placed in any vertical location (when not used with VLB-8436 on same side of enclosure)



MOUNTING BRACKETS 15

- ZR1 or ZR2**, Mounting Brackets
- Vertically mount 1 or 2 RMU wide equipment without taking up RMU space
 - Up to an additional 6 RMU of equipment can be mounted on each rail



enclosure
able to "isolate" airflow
s while allowing cables to pass through

CABLE MANAGEMENT ACCESSORIES

OVERHEAD MANAGEMENT

Part No.	Description
LRB-12	Single Ladder Rack Bracket; to support 12.00"W ladder rack; for ES Enclosures only
LRB-24	Single Ladder Rack Bracket; to support 18" - 24"W ladder rack; for ES Enclosures only
TCT24	Top Cable Trough with hardware for 24.00"W ES Enclosures; 6.50"W x 4"D x 24"L
TCT30	Top Cable Trough with hardware for 30.00"W ES Enclosures; 6.50"W x 4"D x 30"L
TCT32	Top Cable Trough with hardware for 32.00"W EN Enclosures; 6.50"W x 4"D x 32"L
TCT40	Top Cable Trough with hardware for 40.00"W EN Enclosures; 6.50"W x 4"D x 40"L

CABLE RINGS & POSTS



CMP



CM-13



CM-44



CM-11

Part No.	Description
CMP	Single Cable Management Post, 3.00"H
CMP-8	Package of 8 Cable Management Posts
CM-13	Single Cable Ring, inner dimensions 1.06"W x 2.80"D
CM-44	Single Cable Ring, inner dimensions 3.80"W x 3.80"D; used with aluminum uprights
CM-11	Cable Management Ring Kit, includes five rings, inner dimensions 3.00"W x 5.00"D; for use with 29.00"W E and 30.00"W ES Enclosures

19" CABLE ORGANIZERS



CM-07



CM-04



CM-08



CM-16

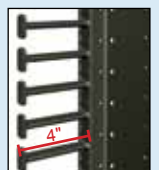


CM-15

Part No.	Description
CM-07	Waterfall Cable Organizer for 19" mounting, 1 RMU
CM-04	Interbay Cable Organizer, 4 front horizontal rings (3.25"W x 2.80"D), 2 RMU
CM-08	Standard Front Cable Organizer, 4 horizontal and 4 vertical rings (1.75"W x 3.75"D), 2 RMU
CM-16	Plastic Horizontal Cable Organizer, 1 RMU, 1.5" x 3"; includes cover
CM-17	Plastic Horizontal Cable Organizer, 2 RMU, 3" x 3"; includes cover (not pictured)
CM-15	Double Sided Cable Organizer with plastic fingers, 2 RMU, 3" x 3"; includes cover

CABLE MANAGEMENT RAIL KIT

Part No.	Description
ESC-K12	ES Cable Management Rail Kit for front or rear rails; includes 12 sections of "fingers" (each section, 7 RMU); rails will need to be recessed 4.5"
ENC-K24	EN Cable Management Rail Kit for front or rear rails; includes 24 sections of "fingers" (each section, 7 RMU)
CM-47	Single section of "fingers" (7 RMU)



BRUSH GROMMET

Part No.	Description
BGT	Brush Grommet Kit to cover top cable pass through knockouts on 30"W ES Enclosures
BGS-78	Brush Grommet Kit to cover rear vertical cable pass throughs; for 78"H ES Enclosures
BGS-84	Brush Grommet Kit to cover rear vertical cable pass throughs; for 84"H x 42"D ES Enclosures
BGS-84-48	Brush Grommet Kit to cover rear vertical cable pass throughs; for 84"H x 48"D ES Enclosures

FLOOR GROMMETS



GLKL3030CP



GLKL2020CP



GLKL10077CP



GLKL20100CP & GLKL20101CP

Part No.	Description
GLKL3030CP	Split Integral Raised Floor Grommet to seal openings 9.25" x 6.75"; pack of 10
GLKL2020CP	Split Surface Mount Raised Floor Grommet to seal openings 10.00" x 7.25" or less; pack of 10
GLKL10077CP	Split Mini Raised Floor Grommet to seal openings 4.00" x 6.00"; pack of 10
GLKL20100CP	Wave Split Integral Floor Grommet to seal 7.75" x 5.625" openings; pack of 10
GLKL20101CP	Cover for Wave Split Integral Floor Grommet; pack of 10

Note: Additional sizes available. Please call 1.866.TRY.GLCC

VERTICAL ORGANIZERS

Part No.	Description
VCT-84	Vertical Cable Trough for 84.00"H ES Enclosure; 68.00"H x 3.00"W x 2.50"D
VCT-78	Vertical Cable Trough for 78.00"H ES Enclosure; 62.00"H x 3.00"W x 2.50"D

LACING BAR KITS

Part No.	Description
VLB-4832	Vertical Lacing Bar Kit for GL480E-2432 Enclosure Only
VLB-4836	Vertical Lacing Bar Kit for GL480ES-2442 Enclosure Only
VLB-7232	Vertical Lacing Bar Kit for 72"H x 32"D E Series Enclosure
VLB-7236	Vertical Lacing Bar Kit for 72"H x 36"D E Series Enclosure
VLB-7836	Vertical Lacing Bar Kit for 78"H x 42"D ES Series Enclosure
VLB-8432	Vertical Lacing Bar Kit for 84"H x 32"D E Series Enclosure
VLB-8436	Vertical Lacing Bar Kit for 84"H x 36", 42" and 48"D E/ES Series Enclosures

Note: All Lacing Bar Kits include one vertical bar, two horizontal bars, and six 12" long cinch straps

MOUNTING BRACKETS

Part No.	Description
ZR1	Zero RMU Bracket Kit to mount 19" EIA equipment; mounts 1 RMU equipment
ZR2	Zero RMU Bracket Kit, to mount 19" EIA equipment; mounts 2 RMU equipment



RACK SOLUTIONS

Many customers prefer the flexibility offered by plastic cable management. Great Lakes has responded to this need by working with leading manufacturers and establishing a comprehensive portfolio of plastic cable management products. When used with Great Lakes 2 and 4 Post Racks, plastic cable management creates a complete solution for patch panels and telecommunications equipment.

1 8" VERTICAL CABLE ORGANIZER

- VCM8-FR** (4 slack spools, 10 retainers, front/rear channel as shown in photo)
VCM8-FO (2 slack spool, 6 retainers, single channel)
- 8" x 80"L vertical channel
 - Each channel holds up to 384 CAT6 cables or 738 CAT5e cables
 - Large fingers align with RMUs
 - Contains large cable pass throughs (4.8" x 2.6")
 - Contains small cable pass throughs (2.6" x 2.6")
 - Hinged cover included

2 5" VERTICAL CABLE ORGANIZER

- VCM5-FR**
(Front/Rear channel as shown in photo)
VCM5-FO
(Single channel)
- 5" x 80"L vertical channel
 - Each channel holds up to 126 CAT6 cables or 246 CAT5e cables
 - Large fingers align with RMUs
 - Contains cable pass throughs
 - Cover included; hinge kit available

3 CABLE RETAINERS

- VCM8-WR** for 8"; (package of 6)
VCM5-CR for 5"; (package of 10)
- Attaches anywhere along fingers to secure cable bundles
 - Available for 8" and 5" channels



4 CABLE SPOOL

- VCM8-SL** (package of 2)
- Helps create proper bend radius
 - Stores cable slack
 - Easily repositionable
 - Able to be mounted in 6 locations
 - For 8" channels only



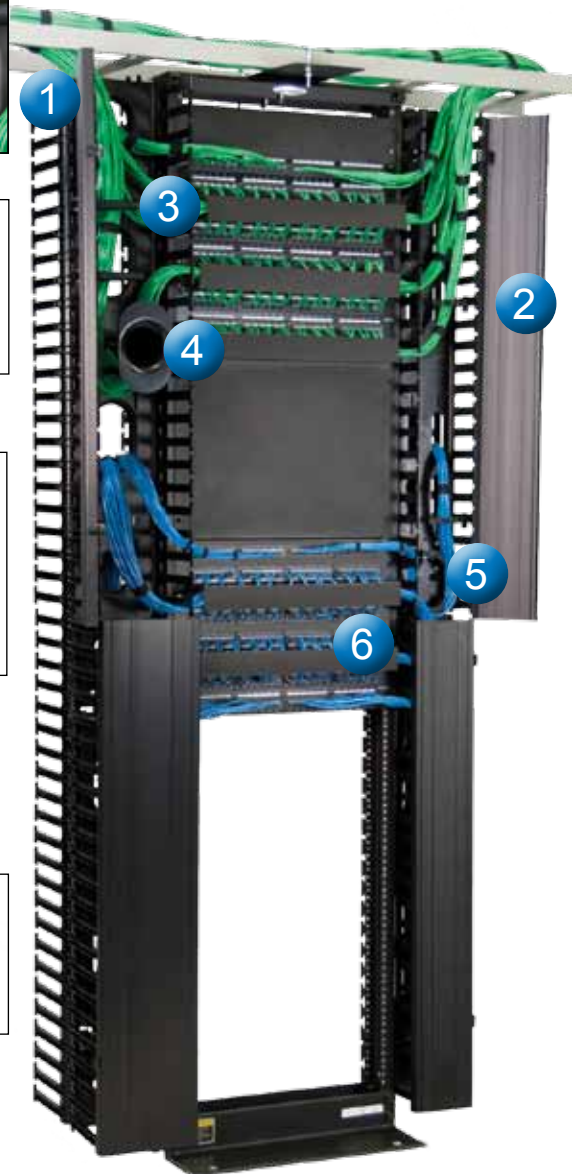
5 SLACK LOOP ORGANIZER

- VCM5-SL** (package of 2)
- Stores slack cables
 - Adjustable to accommodate needed cable slack
 - For 5" channels only

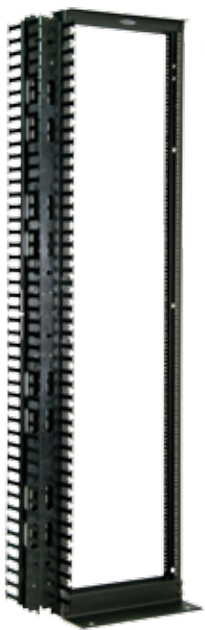


6 19" CABLE ORGANIZERS

- CM-16** (1 RMU) and **CM-17** (2 RMU)
- Helps organize and direct cables
 - Large finger spacing
 - Includes clips to create proper bend radius
 - Cover included



WeRackYourWorld.com



2 POST RACK

Dimensions

84"H x 20.31"H x 14"D

Rack Spaces

45 RMU

Weight Capacity

1500 lbs

Construction

Aluminum with #12-24 tapped holes



4 POST RACK

Dimensions

84"H x 20.60"H x 29"D

Rack Spaces

45 RMU

Weight Capacity

1500 lbs

Construction

Cold Rolled Steel with M6 mounting

RACKS WITH VERTICAL CABLE MANAGEMENT

Part No.

Description

GLRR-1984BA-5FO	2 Post Rack with 5" Vertical Front Cable Management; (includes cover) includes mounting hardware; black anodized finish
GLRR-1984BA-5FR	Same as above except with 5" Vertical Front and Rear Cable Management
GLRR-1984BA-8FO	Same as above except with 8" Vertical Front Cable Management (includes hinged cover)
GLRR-1984BA-8FR	Same as above except with 8" Vertical Front and Rear Cable Management (includes hinged cover)
4PM6-29-5FO	29"D Rack with M6 Mounting and 5" Vertical Front Cable Management; (includes cover) cold rolled steel construction; includes mounting hardware
4PM6-29-5FR	Same as above except with 5" Vertical Front and Rear Cable Management
4PM6-29-8FO	Same as above except with 8" Vertical Front Cable Management (includes hinged cover)
4PM6-29-8FR	Same as above except with 8" Vertical Front and Rear Cable Management (includes hinged cover)

Note: Additional Two and Four Post Rack sizes are available. Please visit WeRackYourWorld.com

OPTIONAL ACCESSORIES

Part No.

Description

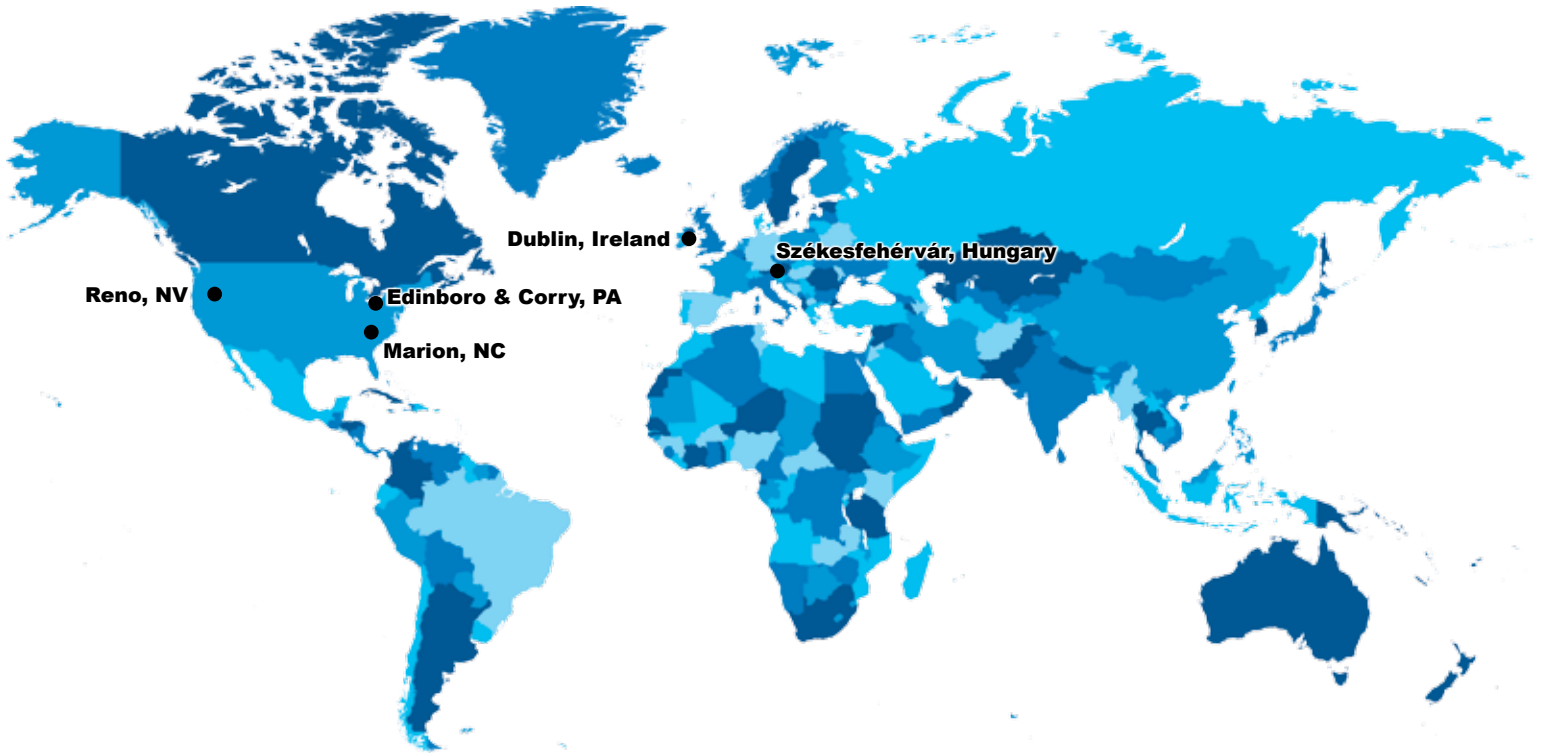
VCM8-FR	Vertical Front & Rear Cable Management, 8" Channel x 80"L; includes 4 spools, 10 wire retainers, and black hinge cover
VCM8-FO	Vertical Front Cable Management, 8" Channel x 80"L; includes 2 spool, 6 wire retainer, and black hinge cover
VCM8-SL	Package of 2, Slack Loop Cable Spool, for 8" channel only
VCM8-WR	Package of 6 Wire Retainers, for 8" channel only
VCM5-FR	Vertical Front & Rear Cable Management, 5" Channel x 80"L, and black snap-on cover
VCM5-FO	Vertical Front Cable Management, 5" Channel x 80"L, and black snap-on cover
VCM5-SL	Package of 2 Slack Loop Storage Organizers, for 5" channel only
VCM5-CR	Package of 10 Cable Retainers, for 5" channel only
VCM5-HNG	Duct Cover Hinge Kit; eliminates need to completely remove cover; for 5" channel only
CM-16	Plastic 19" Cable Organizer, 1 RMU, 1.5" x 3"; includes cover
CM-17	Plastic 19" Cable Organizer, 2 RMU, 3" x 3"; includes cover



GREAT LAKES CASE & CABINET



Invest in Solid Engineering



CORPORATE HEADQUARTERS

P.O. Box 551
Edinboro, PA 16412
1.866.TRY.GLCC
(1.866.879.4522)
Phone: 814.734.7303
Fax: 814.734.3907
glcc@greatcabinets.com

GREAT LAKES MANUFACTURING, INC.

1521 Enterprise Road
Corry, PA 16407
Phone: 814.734.2436
Fax: 814.665.7025
werackyourworld.com
glm@greatmanufacturing.net

WESTERN DISTRIBUTION

4750 Joule Street
Reno, NV 89502
Phone: 775.829.9913
Fax: 775.829.9926
glcc@greatcabinets.com

GREAT LAKES INTERNATIONAL LTD.

Aerbridge House, Unit 14
Dunshaughlin Business Park
Dunshaughlin Co. Meath
Ireland
Phone: 011 353 1 825 8777
Fax: 011 353 1 825 8778

GREAT LAKES HUNGARY KFT

Zsurló utca 13
8000 Székesfehérvár
Hungary
Phone: 011 36 22 880 420
Fax: 011 36 22 880 429



ETSI Associate Member



1.866.TRY.GLCC